



# BIOCLEAN CLEARVIEW™ Autoclavable Panoramic Goggles BCAP

## About

Constructed in super-soft thermoplastic rubber to provide unrivalled comfort, BioClean Clearview™ Autoclavable Panoramic Goggles feature an indirect ventilation system, and an adjustable strap with polypropylene hook and eye clip for easier donning. The toughened anti-scratch polycarbonate lens has extra depth and width for increased field of vision and wearing over large eye-glasses.

## Specifications

### MATERIAL:

Thermoplastic rubber frame, toughened polycarbonate lens, latex-free silicone head band with polypropylene hooks

### COLOUR:

White frame and translucent strap

### CLASSIFICATION:

EN 166:2001 Optical Class 1

### COMPATIBILITY:

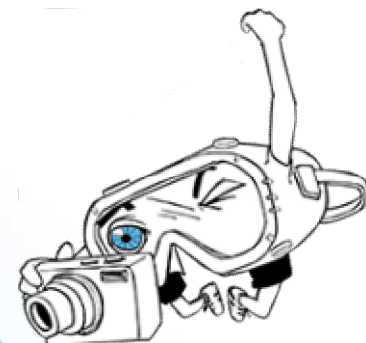
ISO Class 4 & EU GMP Grade A

### STERILIZATION:

Provided non-sterile. To be autoclaved at 121°C

## Features

- Super-soft thermoplastic rubber frame
- Indirect ventilation system
- Toughened polycarbonate, anti-scratch optically correct lens
- Extra depth and width for wearing over eye-glasses
- Non-linting latex-free head band
- Tested to withstand more than 40 autoclave cycles @ 121°C



Lens Gogglestrong™ represents BioClean's™ range of GMP compatible Cleanroom goggles

INDIRECT VENTILATION SYSTEM  
OPTICALLY CORRECT  
EXTRA WIDE FIELD OF VISION  
EXTRA DEPTH FOR EYE-GLASSES  
TOUGHENED POLYCARBONATE, ANTI-SCRATCH LENS



## Quality Standards

- Manufactured in a facility holding ISO 9001:2008 and 89/686/EEC Article 11b certifications
- Processed in an NEBB certified ISO Class 4 cleanroom environment
- Conforms to Category 2 – Personal Protective Equipment PPE Directive 89/686/EEC
- Complies with requirements of EN 166:2001 standard for personal eye protection

## Sterilization

Provided non-sterile. To be autoclaved at 121°C

## Shelf Life & Storage

Five (5) years from date of manufacture. Store in a dry, cool place (<40°C) away from direct sunlight and fluorescent light.

## Physical Properties

Total Weight ( $\pm 2g$ )	103 g
Lens Thickness ( $\pm 0.3mm$ )	2.1mm
Bridge Width ( $\pm 0.5mm$ )	50mm
Bridge Height ( $\pm 0.5mm$ )	25mm
Overall Width (hinge to hinge)( $\pm 3mm$ )	160mm
Overall Height ( $\pm 3mm$ )	80mm

## Explanation of Markings

REQUIRED MARKINGS	MARKINGS ON FRAME	MEANING
Manufacturer's Identification Mark	BioClean	BioClean™
Standard Number	EN166	European Standard on Personal Eye Protection
Field of Use	BT	Medium energy impact at extremes of temperature
Optical Class	1	High optical quality
Conformity Mark	CE	Conformity with European Standards

## TO ORDER

### Re-order code

BCAP  
BCAP-SL  
BCAP-SS

### Item

Goggle  
Replacement Lens  
Replacement Strap

### Packing

Goggle (BCAP):

One piece per sealed PE bag (to be removed prior to autoclaving); 12 bags per inner box; five boxes per lined carton (60 pieces)

Replacement Lens (BCAP-SL):

One piece per sealed PE bag; 10 bags per inner box; 10 boxes per lined carton (100 pieces)

Replacement Strap (BCAP-SS):

25 pieces per sealed PE bag; two bags per inner box; 10 boxes per lined carton (500 pieces)

## CONTACT

### Europe

#### (Headquarters)

Nitritex Ltd.  
Minton Enterprise Park,  
Oaks Drive,  
Newmarket, Suffolk,  
CB8 7YY,  
United Kingdom

T: +44 (0) 1638 663338

F: +44 (0) 1638 668890

E: [europa@bioclean.com](mailto:europa@bioclean.com)

### Other Regions

Asia:

[malaysia@bioclean.com](mailto:malaysia@bioclean.com)

Americas:

[americas@bioclean.com](mailto:americas@bioclean.com)



BioClean™ is a brand of Nitritex Ltd.

For more information, please visit [www.bioclean.com](http://www.bioclean.com)

BCAP/1604/PDS10